



KEMENTERIAN PENGANGKUTAN
MALAYSIA



<http://dpn.mot.gov.my/index.html>

NATIONAL TRANSPORT POLICY 2019-2030



www.mot.gov.my



motmalaysia



ministryoftransportmy



INTRODUCTION

The Cabinet has agreed to emphasis to the NTP Implementation Plan to ensure that this policy is achieved by 2030:

- i. **Implementing agencies need to prepare, coordinate and monitor each initiative implemented with the stakeholders involved.** Ministry of Transport will monitor the overall achievement of this policy through periodic monitoring; and
- ii. Implementation of initiatives are **dynamic in nature in line with the changing of current trends.**





NTP 2019-2030 PROVIDES STRATEGIC DIRECTIONS FOR A SUSTAINABLE TRANSPORT SECTOR

NATIONAL TRANSPORT POLICY

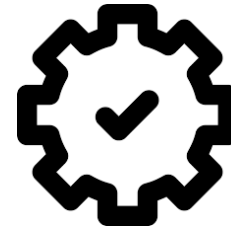


The National Transportation Policy is important for the following purposes:



Provide strategic directions for ministries/agencies to plan and develop the transport sector

Streamline initiatives and programs to achieve common objectives and goals



Ensure the **efficiency and effectiveness of resource use**

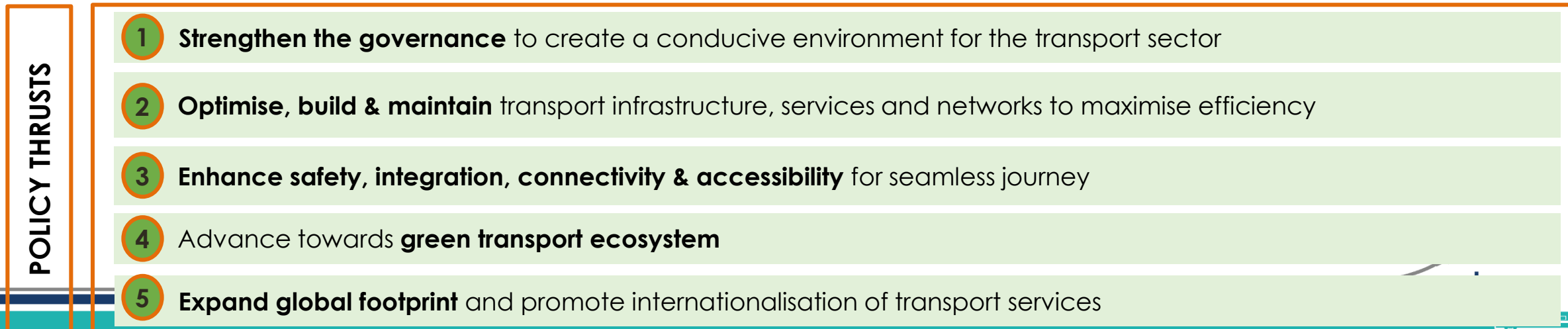
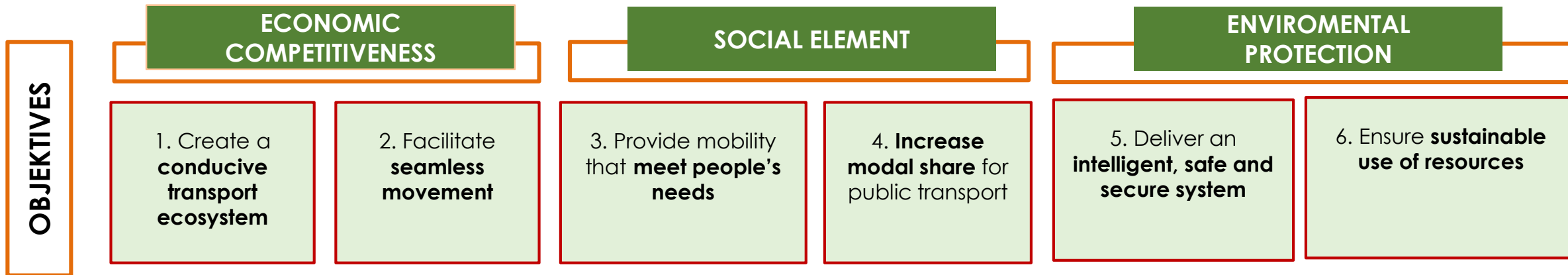
Ensure planning by sector **complements each other**





THE VISION OF NTP 2019-2030 IS ANCHORED ON THE PRINCIPLES OF SUSTAINABLE TRANSPORT

To develop a sustainable transport sector that accelerates economic growth and supports the well-being of the *rakyat* in line with an advanced nation status



5 policy thrusts and 23 strategies have been developed



KEMENTERIAN PENGANGKUTAN
MALAYSIA

POLICY THRUST 1: STRENGTHEN THE GOVERNANCE TO CREATE A CONDUCTIVE ENVIRONMENT FOR THE TRANSPORT SECTOR

*GT – Governance in Transport





KEMENTERIAN PENGANGKUTAN
MALAYSIA

POLICY THRUST 2: OPTIMISE, BUILD & MAINTAIN TRANSPORT INFRASTRUCTURE, SERVICES AND NETWORKS TO MAXIMISE EFFICIENCY



6

STRATEGIES

AT1 Implement smarter and more efficient use of existing infrastructure and in developing new infrastructure



AT2 Increase the utilisation of rail service for passenger and goods



AT3 Upgrade hinterland connectivity to gateways and connect corridors for economic distribution



AT4 Reinforce maintenance regime of transport infrastructure



AT5 Enhance competitiveness in air cargo operation



AT6 Modernize integrated logistics to reduce the cost of doing business



*AT – Asset in Transport



KEMENTERIAN PENGANGKUTAN
MALAYSIA

POLICY TRUST 3: ENHANCE SAFETY, INTEGRATION, CONNECTIVITY & ACCESSIBILITY FOR SEAMLESS JOURNEY

4 STRATEGIES



CT1



Strengthen enforcement to ensure adherence to rules and regulations

CT2



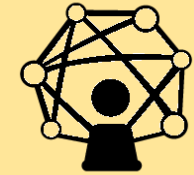
Adopt a safe system approach that advocates safer road users, infrastructure and vehicles

CT3



Ensure that safety and security is in **accordance to international standards**

CT4



Strengthen transport infrastructure and intensify use of digitalisation to **improve accessibility and acceptability**

**CT – Connectivity in Transport*





KEMENTERIAN PENGANGKUTAN
MALAYSIA

POLICY THRUST 4: ADVANCE TOWARDS GREEN TRANSPORT ECOSYSTEM

5 STRATEGIES

ST1 Enforce compliance with acts / regulations and shift towards international environmental standards



ST2 Prioritise public transport network as fundamental structure in urbanised areas



ST3 Accelerate implementation of low carbon mobility initiatives



ST4 Institute measures to control pollution, noise and waste from the transport sector



ST5 Develop effective CEPA to create behavioural change



POLICY TRUST 5: EXPAND GLOBAL FOOTPRINT AND PROMOTE INTERNATIONALISATION OF TRANSPORT SERVICES

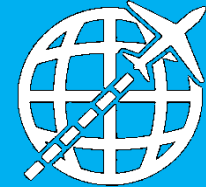
3 STRATEGIES

IT1



Create an environment that facilitates local transport industry operators to become regional or global players

IT3



Ensure transport-related agencies are sufficiently equipped to support drive in **improving Malaysia's ranking in global competitiveness indices**

IT2



Facilitate regional cooperation and agreements that improve the transport industry

